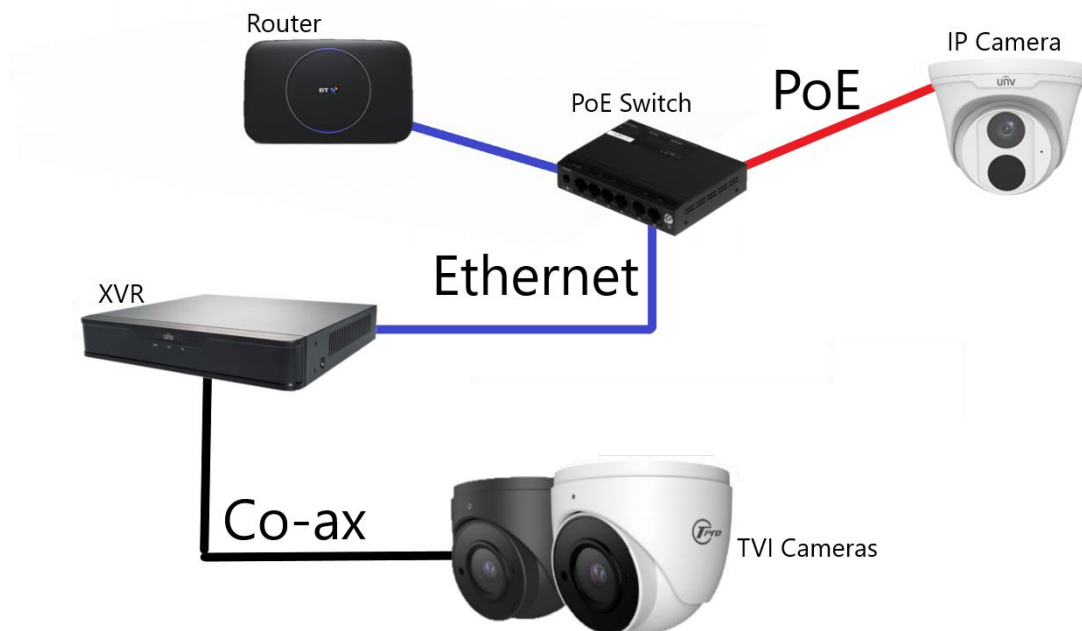
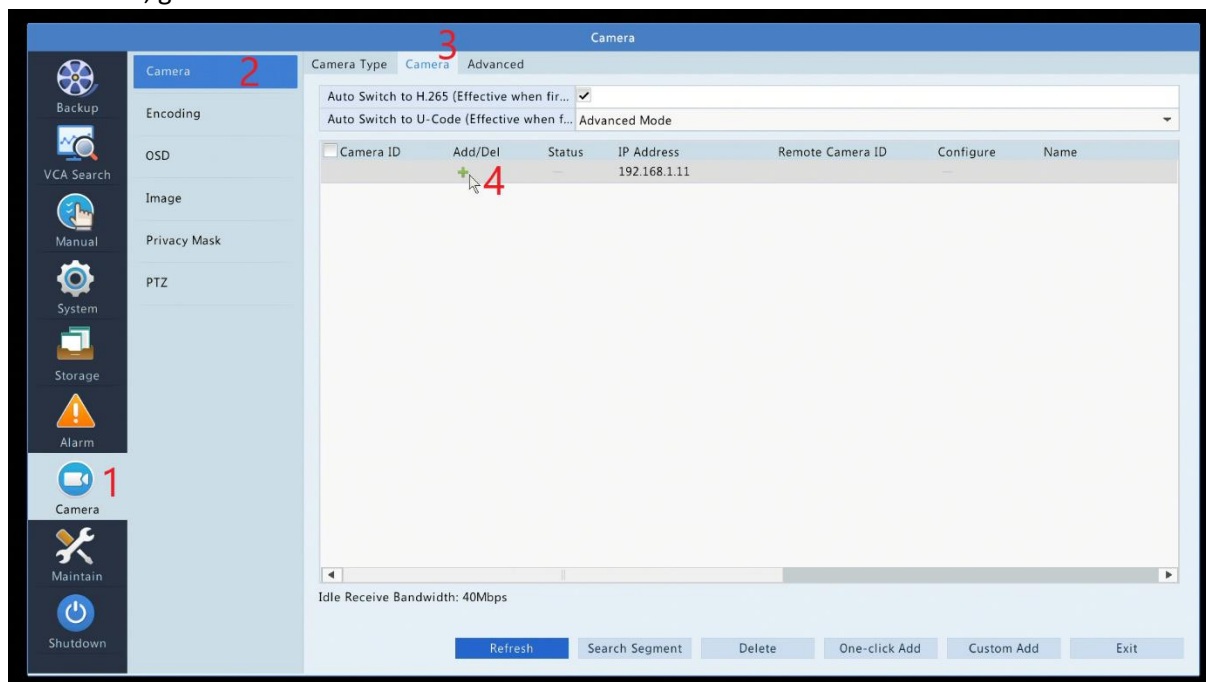


# Adding IP cameras to a Uniview XVR

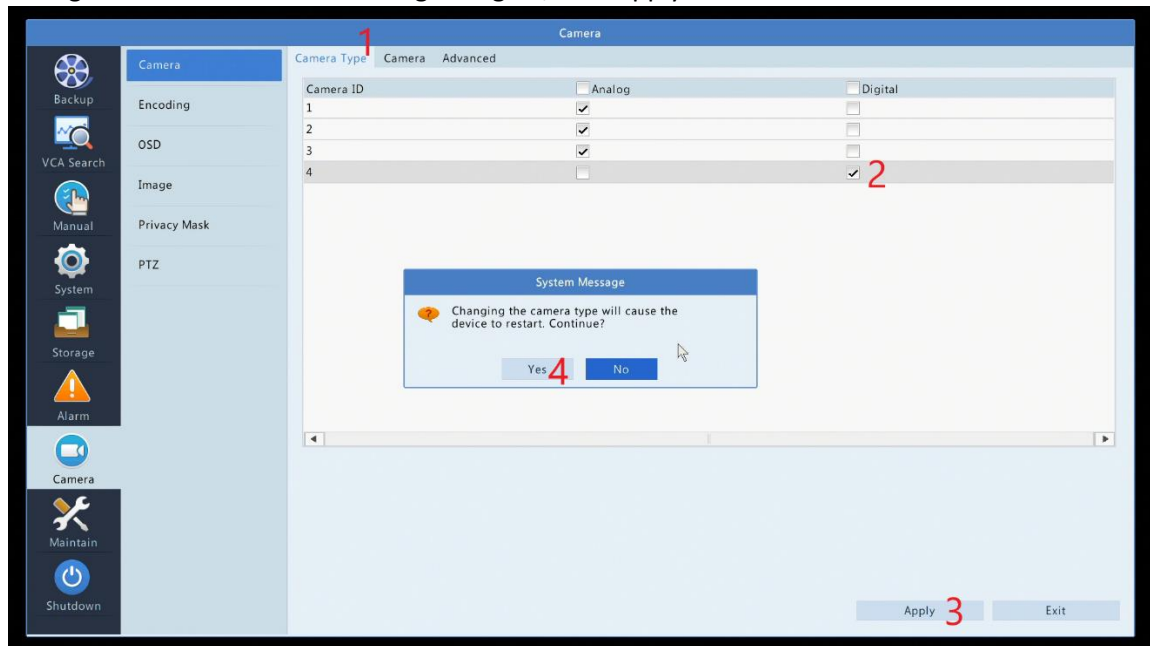


1. Connect Switch to router via an Uplink port
2. Connect XVR and IP Cameras to switch
3. On the XVR, go to Menu > Camera > Camera tab



4. To add a camera in addition to the coax channels e.g. D5, click the green + icon

5. To add a camera in place of a co-ax channel e.g swap A4 for D4
- Click the Camera Type tab
  - Change the Camera ID from Analog to Digital, click Apply



- Allow the recorder to reboot, then go back to Camera > Camera tab
- Add a camera as in step 4

6. **IMPORTANT** To ensure the cameras have a static IP, click the Config icon, then change the last segment of the IP address. It's recommended to use a number high up in the range, to avoid conflict with other network devices e.g. xxx.xxx.xxx.241

